

Internet Explorer

Fill in passwords automatically.

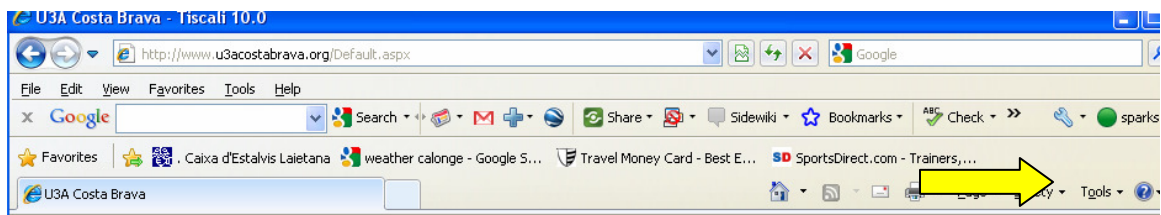
By default, Internet Explorer is set up to remember passwords automatically if you would like it to do so. When you first type a password into a web form, you will be asked if you would like Internet Explorer to remember the password. If you would like the password to be remembered, simply click **Yes**.



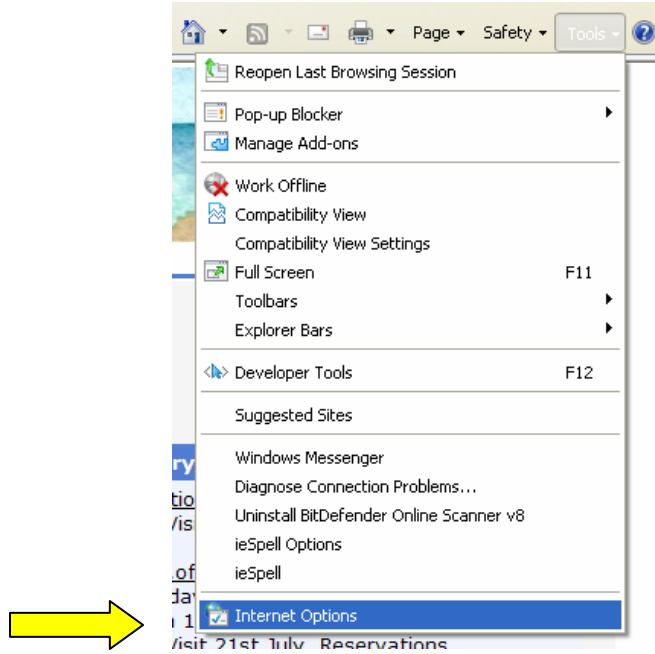
If you are not asked whether you would like the password to be remembered, you need to turn on the AutoComplete feature.

To turn on the AutoComplete feature

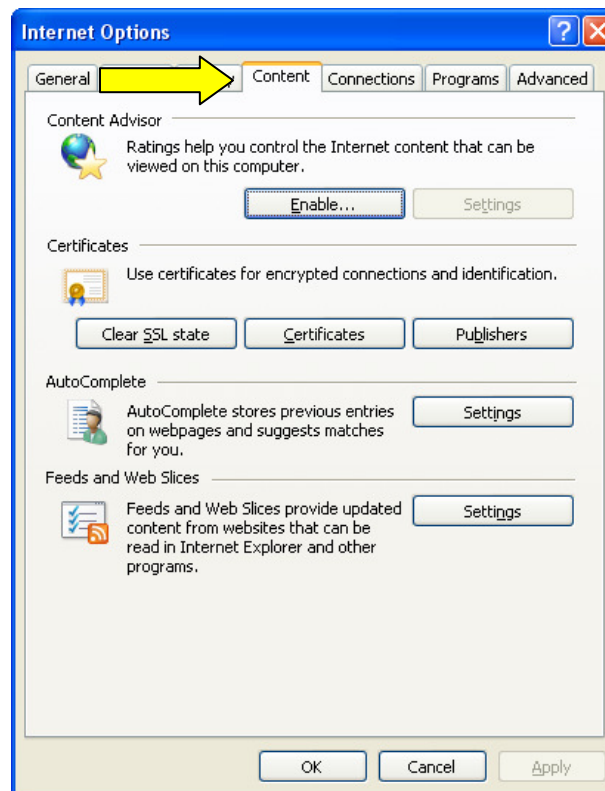
1. In Internet Explorer, click the **Tools** button.



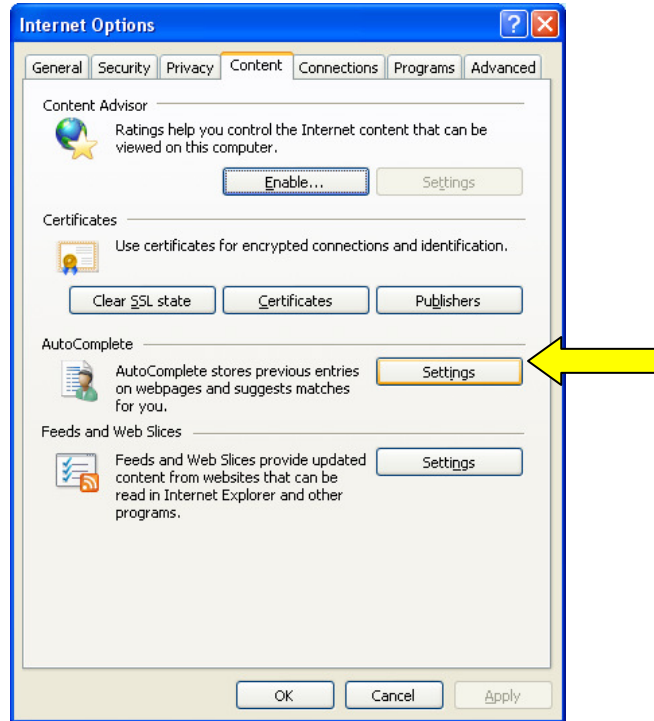
2. Then click **Internet Options**.



3. Click the **Content** tab.



4. Under **AutoComplete**, click **Settings**.



5. Select the **User names and passwords on forms** check box.
6. If you would like Internet Explorer to ask you for permission to save new passwords, select the **Ask me before saving passwords** check box. If you want Internet Explorer to save passwords automatically and not ask for your permission for each new password, clear that check box.
7. Click **OK** twice.

